

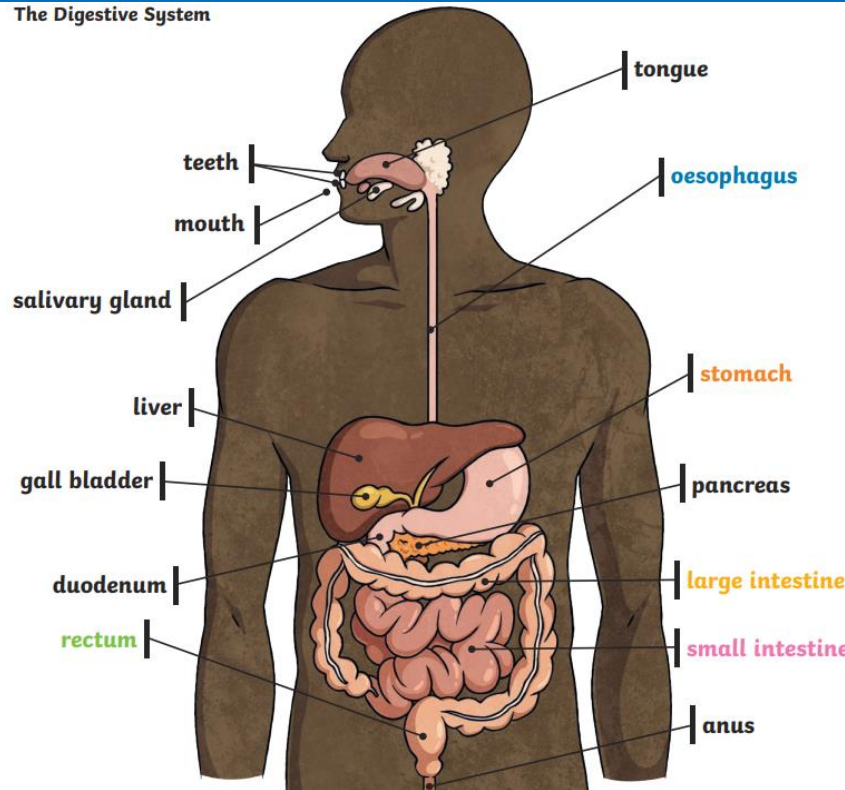
Enquiry Question: Why is it vital our digestive system functions properly?

**Key Vocabulary**

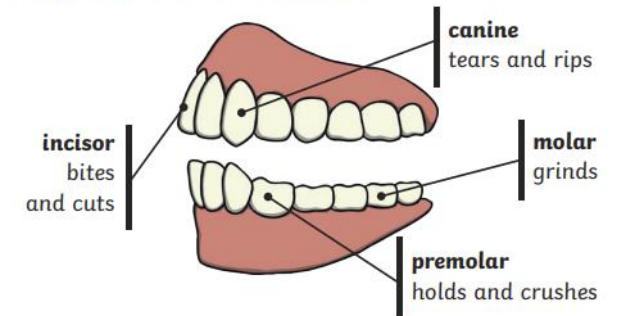
<b>Digest</b>	Break down food so it can be used by the body.
<b>Oesophagus</b>	A muscular tube which moves food from the mouth to the stomach
<b>Stomach</b>	An organ in the digestive system where food is broken down with stomach acid and by being churned around.
<b>Small intestine</b>	Part of the intestine where nutrients are absorbed into the body.
<b>Large intestine</b>	Part of the intestine where water is absorbed from remaining waste food. Faeces are formed in the large intestine.
<b>Rectum</b>	Part of the digestive system where faeces are stored before leaving the body through the anus
<b>Herbivore</b>	An animal that eats plants.
<b>Omnivore</b>	An animal that feeds on plants and other animals.
<b>Carnivore</b>	An animal that feeds on other animals.

**Key Information**

The Digestive System



Human Teeth and Their Functions



Some people have wisdom teeth but they have no function now.

**To help prevent tooth decay:**

- limit sugary food and drink;
- brush teeth at least twice daily using a fluoride toothpaste;
- visit your dentist regularly.



## Hyde Park Junior School - Science

Enquiry Question: Why is it vital our digestive system functions properly?

**Topic: Animals including Humans**

**Year: 4**

**Strand: Biology**

<b>Question 1: Name three parts of the digestive system.</b>	<b>Start of unit:</b>	<b>End of unit:</b>
Part 1		
Part 2		
Part 3		
<b>Question 3: We have 5 different types of teeth.</b>	<b>Start of unit:</b>	<b>End of unit:</b>
True		
False		

<b>Question 2: All animals eat meat</b>	<b>Start of unit:</b>	<b>End of unit:</b>
True		
False		

<b>Question 4:</b>	<b>Start of unit:</b>	<b>End of unit:</b>
<b>Why should we avoid tooth decay?</b>		

<b>Question 5: Give three ways the human digestive system is similar to other animals and three ways it is different.</b>	<b>Start of unit:</b>	<b>End of unit:</b>
Similarities		
Differences		