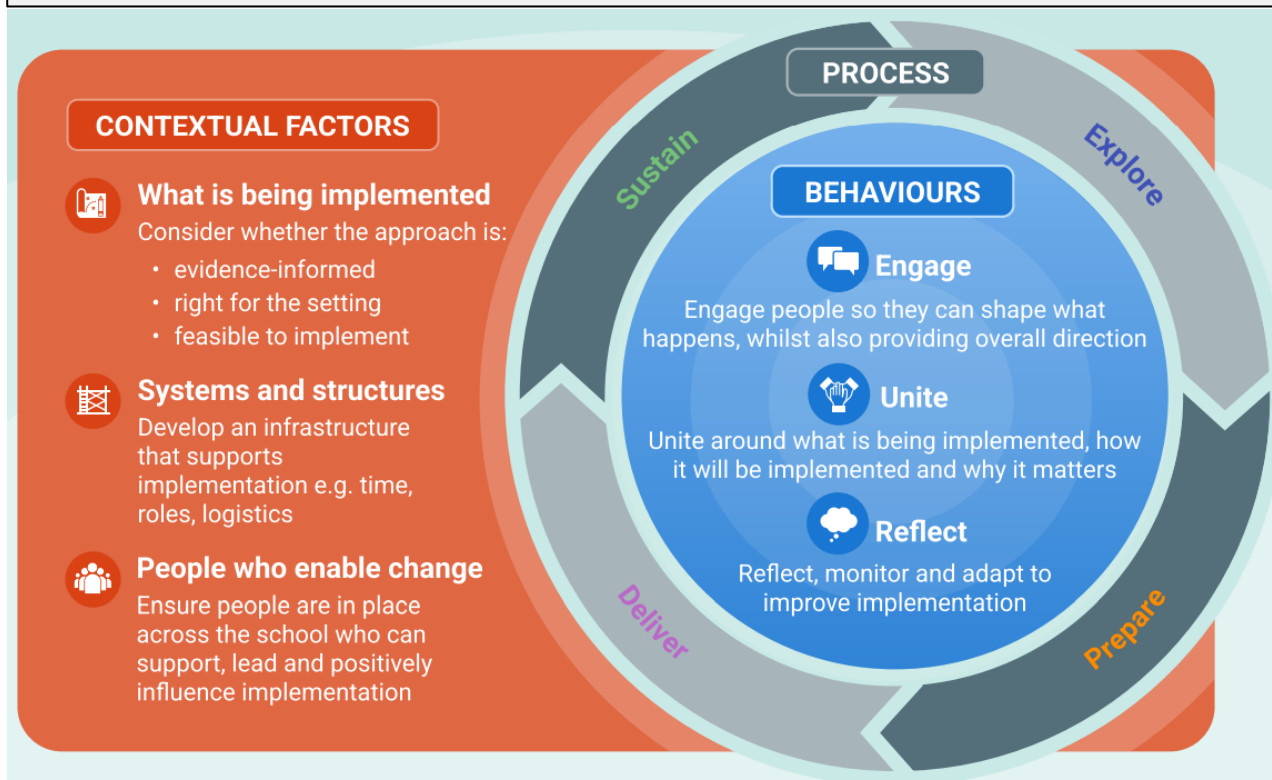
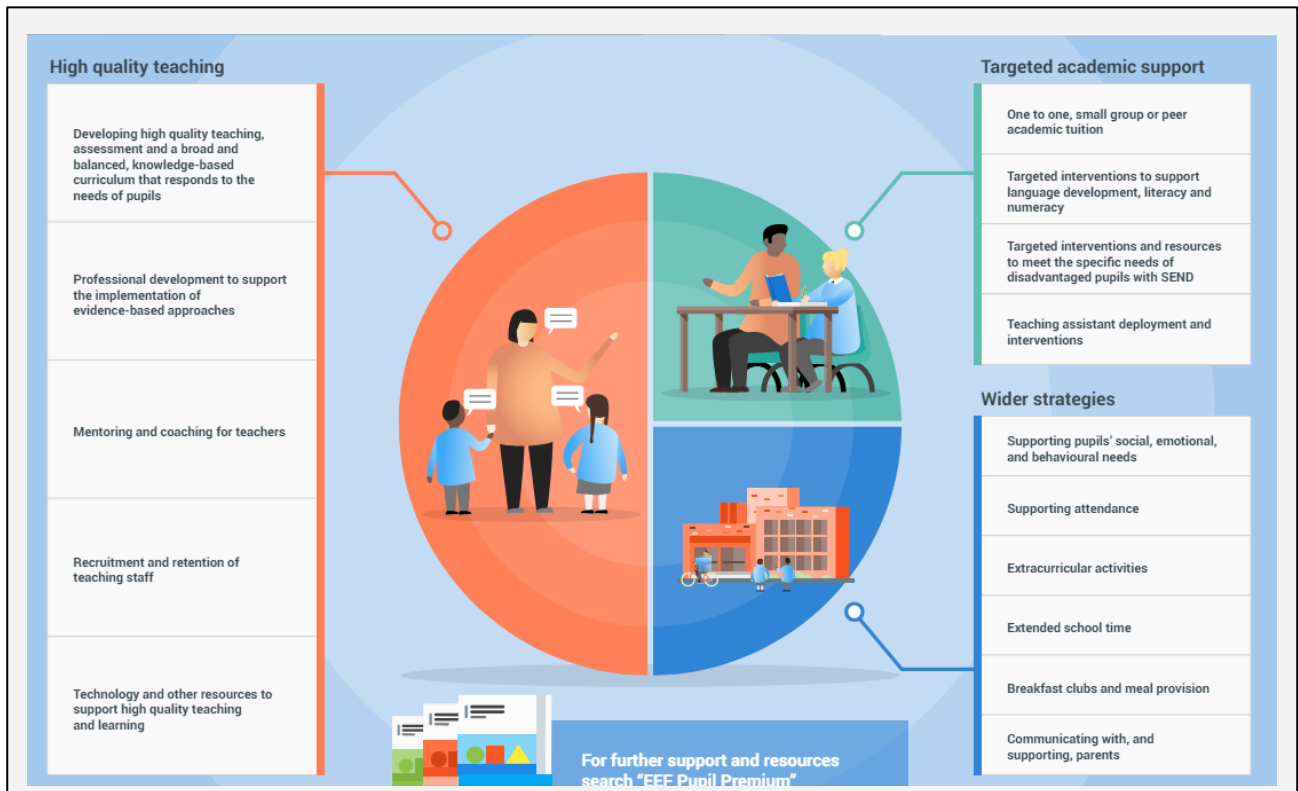


Pupil Premium strategy statement – Hyde Park Junior School



This statement details our school's use of pupil premium (and recovery funding) for the 2024-2025 academic year) funding to help improve the attainment of our disadvantaged pupils.

It outlines our pupil premium strategy, how we intend to spend the funding in this academic year and the effect that last year's spending of pupil premium had within our school.

School overview

Detail	Data
School name	Hyde Park Juniors
Number of pupils in school	357
Proportion (%) of pupil premium eligible pupils	16.24%
Academic year/years that our current pupil premium strategy plan covers	2024-2025
Date this statement was published	October 2024
Date on which it will be reviewed	October 2025
Statement authorised by	Yvonne Jones Leah Daley
Pupil premium lead	Emma Foster
Governor / Trustee lead	Leah Daley

Funding overview

Detail	Amount
Pupil premium funding allocation this academic year	£84800
Recovery premium funding allocation this academic year	£0
Pupil premium funding carried forward from previous years (enter £0 if not applicable)	£0
Total budget for this academic year	£84800

Part A: Pupil premium strategy plan

Statement of intent

At Hyde Park Primary Schools, our intention is that all pupils, irrespective of their background or the challenges they face, make good progress and achieve high attainment across all subject areas.

All members of staff and governors accept responsibility for 'socially disadvantaged' pupils and are committed to meeting their pastoral, social and academic needs within the school environment.

The Leadership Team will be responsible for Pupil Premium provision, under the leadership and guidance of the Headteacher, with specific delegated responsibilities taken by individual members (e.g. pupil progress, English and maths provision, welfare and inclusion support). We will ensure that teaching and learning opportunities meet the needs of all pupils, since our primary purpose is to ensure that High Quality First Teaching is provided throughout the Academy.

We will ensure that appropriate provision is made for pupils who belong to vulnerable groups; this includes ensuring that the needs of socially disadvantaged pupils are adequately assessed and addressed, using robust diagnostic assessments, to ensure early action and intervening at the point of need.

In making provision for socially disadvantaged pupils, we recognise that not all pupils who receive free school meals will be socially disadvantaged, however, we also recognise that not all pupils who are socially disadvantaged are registered or qualify for Free School Meals (FSM), so we will ensure that entitled parents and carers are supported sensitively in applying for the meals, and therefore the additional funding.

We recognise that Service children have their own unique needs and use the funding to support these effectively.

Pupil Premium funding will be allocated to those pupils who are eligible, including proportional funding of strategies accessed by Pupil Premium and non-Pupil Premium children alike.

All our work through the pupil premium will be aimed at accelerating progress, moving children to at least age-related expectations (ARE) especially in English and maths.

The Pupil Premium funding will be allocated to provide support and/or interventions, the ultimate outcome of which will be that pupils will achieve their academic and personal potential. Our chosen approaches are research based from the Education Endowment Foundation (EEF) with good teaching being the most important lever to improve outcomes for disadvantaged pupils.

Funded interventions may include pastoral support where appropriate e.g. attendance support, family liaison, development of social skills. Additional provision for SEND pupils may be funded through a combination of any SEND funding and their Pupil Premium allocation where applicable.

We will constantly monitor the effectiveness of strategies used and review provision in the light of tracking data and other evidence (e.g. additional impact measures used by external agencies).

We will involve the widest possible group of appropriate stakeholders, especially members of the staff team, the Learning Academies Trust, Local Governors, pupils and their families, to support our strategy.

Our approach will be responsive to common challenges and individual needs, rooted in robust diagnostic assessment. The approaches we have adopted complement each other to help pupils excel.

To ensure they are effective we will:

- ensure disadvantaged pupils are challenged in the work that they're set
- act early to intervene at the point need is identified
- adopt a whole school approach in which all staff take responsibility for disadvantaged pupils' outcomes

Challenges

This details the key challenges to achievement that we have identified among our disadvantaged pupils.

Challenge number	Detail of challenge
1	<p>Low entry point in Reading</p> <p>Internal assessments indicate that attainment in Reading among disadvantaged pupils is below that of non-disadvantaged pupils on entry to KS2.</p>
2	<p>Low entry point in Writing</p> <p>Internal assessments indicate that attainment in Writing among disadvantaged pupils is below that of non-disadvantaged pupils on entry to KS2.</p>
3	<p>Low entry points Mathematics:</p> <p>Internal and external assessments indicate that mathematic attainment among disadvantaged pupils is significantly below that of non-disadvantaged pupils on entry.</p>
4	<p>Attendance:</p> <p>Our assessments and observations indicate that absenteeism is negatively impacting disadvantaged pupils' progress.</p> <p>Attendance for disadvantaged pupils is slightly less than that of non-disadvantaged pupils.</p> <p>For Service children, delays in school allocations due to mobility or parental deployment may impact attendance.</p>

5	<p>Social, Emotional, Mental Health:</p> <p>Our wellbeing and safeguarding team have identified social and emotional issues for many pupils and their families, including service children. These may include a lack of personal support, delays in external social services support and a lack of enrichment opportunities. These challenges particularly affect disadvantaged pupils, including their attainment.</p> <p>Teacher referrals for support have markedly increased following the pandemic and continue to rise. 47% of SEN pupils currently require additional support with social and emotional or learning needs, with 50% of these pupils being in receipt of pupil premium.</p> <p>For Service children, mobility and parental deployment may impact mental health and well-being.</p>
---	---

Intended outcomes

This explains the outcomes we are aiming for **by the end of our current strategy plan**, and how we will measure whether they have been achieved.

Intended outcome	Success criteria
High quality tuition / booster	<p>There will be increased access to time, space, resource and expertise, enabling the acceleration of progress towards ARE (Reading, Writing and Maths)</p> <p>Measure: <i>Number of pupils attending tuition/booster provision (100% <BARE Pupil Premium Pupils)</i> <i>Subject Leader Intervention Impact Report (individual Interventions)</i> <i>Termly NFER data</i> <i>End of Key Stage performance data</i></p>
High quality teaching & learning	<p>Evidence informed effective teaching in the classroom will be refined and developed through a tailored and high quality CPD package, including NPQs, enabling the acceleration of progress towards ARE (Reading, Writing, Maths and Oral Language)</p> <p>Measure: <i>Staff pupil voice, evidence of CPD strategy and internal QA records</i> <i>Termly NFER data</i> <i>End of Key Stage performance data</i></p>
High quality in school support and intervention	<p>Implementation of effective evidence-informed intervention, targeted specifically at identified gaps in learning, enabling the acceleration of progress towards ARE (Reading, Writing, Maths and Oral Language)</p> <p>Measure:</p>

	<i>Impact evidence from school led tutors, academic mentors, subject specialists and/or HLTAs</i> <i>Termly NFER data</i> <i>End of Key Stage performance data</i>
To achieve high attendance for all pupils, particularly our disadvantaged pupils.	Sustained high attendance demonstrated by: <ul style="list-style-type: none"> the overall absence rate for all pupils being no more than 4.11% (95.89% average attendance). Target = 97% The percentage of all pupils who are persistently absent being no more than 8%

Activity in this academic year

This details how we intend to spend our pupil premium (and recovery premium funding) **this academic year** to address the challenges listed above.

Teaching (for example, CPD, recruitment and retention)

Budgeted cost: £13, 450

Activity	Evidence that supports this approach	Challenge number(s) addressed
Increase/adaptation of in class teaching capacity	Targeted and Academic Support Additional specialist teacher to target pupil's misconceptions in English and maths (pre and post teach opportunities/ 1:1 / small groups) EEF: Small Group Tuition +4	1,2 and 3
Extended day teaching before and/or after school	Breakfast Club/After School Club EEF: NSBP Breakfast +2 months Targeted and Academic Support Targeted/ Vulnerable pupils receive additional core subject teaching during the extended school day EEF: Extending School Time School +2 months	1,2,3,4 and 5
Oral Language and Vocabulary	Targeted Speech and Language support Oracy CPD	

Targeted academic support (for example, tutoring, one-to-one support structured interventions)

Budgeted cost: £48, 650

Activity	Evidence that supports this approach	Challenge number(s) addressed
<i>Targeted small group intervention</i>	Targeted and Academic Support Additional staff target pupil's misconceptions in English and Maths (pre and post teach opportunities / 1:1 / small groups) EEF: Small Group Tuition +4	1, 2 and 3
<i>TA Support</i>	Targeted and Academic Support Additional staff target pupil's misconceptions in English and Maths (1:1 / small groups) EEF: Small Group Tuition +4	1, 2 and 3

Wider strategies (for example, related to attendance, behaviour, wellbeing)

Budgeted cost: £27, 470

Activity	Evidence that supports this approach	Challenge number(s) addressed
<i>Inclusion and Child Protection strategies</i>	Keeping Children Safe in Education High proportion of families deemed as deprived.	4,5
<i>Family support and liaison (FSA)</i>	Keeping Children Safe in Education High proportion of families deemed as deprived. EEF -Social and Emotional Learning	4,5
<i>Educational Psychologist or other MAST specialist services</i>	Keeping Children Safe in Education High proportion of families deemed as deprived.	4,5
<i>Education Welfare Officer</i>	Keeping Children Safe in Education High proportion of families deemed as deprived.	4,5
<i>Residential and enrichment experiences</i>	EEF – Arts Participation Ensuring that all children have equal access to social and cultural capital opportunities.	1,2,3,4 and 5

Total budgeted cost: £89, 570

Part B: Review of outcomes in the previous academic year

Pupil premium strategy outcomes

This details the impact that our pupil premium activity had on pupils in the 2023 to 2024 academic year.

1 Academic attainment of PP pupils compared to other pupils

We have analysed the performance of our school's disadvantaged pupils during the previous academic year, drawing on internal summative and formative assessments. By the end of KS2, through high quality teaching and targeted interventions, pupil premium pupils have closed the gap in attainment in Maths and have outperformed non-pp pupils. The gap remains for Reading and Writing therefore this will be the area of focus in the coming year.

2 Attendance of PP pupils compared to other pupils

Through targeted support, and the school working closely with families and the EWO, the gap in attendance closed last year between pupil premium and non-pupil premium children with the attendance of PP pupils being within 5% of non-PP pupils.

3 Emotional Regulation of vulnerable pupils

The impact of TISUK CPD has had a positive impact on the role that staff play in supporting pupils who need support with emotional regulation. The FSA has also been instrumental in working with our most vulnerable pupils and their families, in addition to a robust use of the ELSA programme to identify and support pupils in managing their own emotional literacy. Progress is recorded against all PP pupils on either Individual Support Plans or Family Support Advisor caseload.

Measure	Outcome – ARE or better				
	All	PP Children	Non-PP Children	Service Children	Non-Service Children
End of KS2 Attainment in Reading	79%	65%	82%	100%	78%
End of KS2 Attainment in Maths	64%	80%	70%	100%	63%
End of KS2 Attainment in Writing	62%	35%	69%	67%	63%

Measure	Outcome				
Attainment in Reading	ARE or better	All Pupils	PP pupils	Non-PP Pupils	
	Year 3, 4, 5	64%	53%	68%	
	Year 6	79%	65%	82%	
	Whole school	68%	56%	72%	
Attainment in Writing	ARE or better	All Pupils	PP pupils	Non-PP Pupils	
	Year 3, 4, 5	50%	33%	53%	
	Year 6	62%	35%	69%	
	Whole school	53%	34%	57%	
Attainment in Mathematics	ARE or better	All Pupils	PP pupils	Non-PP Pupils	
	Year 3, 4, 5	66%	55%	68%	
	Year 6	64%	41%	70%	
	Whole school	65%	52%	69%	
Combined At-tainment	ARE or better	PP pupils	Non-PP Pupils		
	Y3	42%	56%		
	Y4	11%	43%		
	Y5	25%	40%		
	Y6	29%	60%		
Attendance	All	PP Pupils	Non-PP Pupils	Service Children	Non-Service Children
2023-2024	94.73%	92.94%	95.14%	95.76%	94.68%

Externally provided programmes

Please include the names of any non-DfE programmes that you purchased in the previous academic year. This will help the Department for Education identify which ones are popular in England

Programme	Provider
Read, Write Inc	Ruth Miskin
Accelerate Reader	Renaissance

Service pupil premium funding (optional)

For schools that receive this funding, you may wish to provide the following information:

Measure	Details
How many children are eligible for service pupil premium funding?	16
How did you spend your service pupil premium allocation last academic year?	ELSA and TISUK trained staff to support children with deployed parents FSA support for children and their families
What was the impact of that spending on service pupil premium eligible pupils?	When parents are on deployment, children and their families are supported socially and emotionally. They start to build a network of friends who are in similar family set ups to themselves which is important for their sense of belonging and identity at Hyde Park. Emotional needs can be met in a well informed and timely manner as we have trained staff to support when needed.

Further information (optional)

Use this space to provide any further information about your pupil premium strategy. For example, about your strategy planning, or other activity that you are implementing to support disadvantaged pupils, that is not dependent on pupil premium or recovery premium funding.